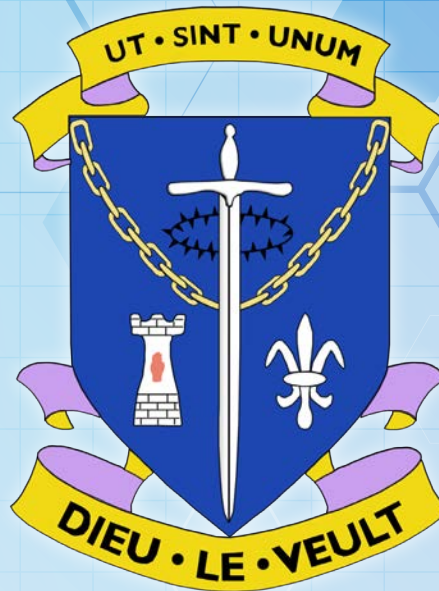


2019



6th

St Louis Grammar School Form Prospectus

bright ideas start here



www.stlouis6thform.com

151 Newry Road, Kilkeel, County Down BT34 4EU. Tel (028) 4176 2747



Contents

Welcome	1	➔
Choosing your course	3-4	➔
Courses and levels	5	➔
Why choose us?	6	➔
Facilities	7	➔
What is expected?	8	➔
Careers	35-37	➔
Tariffs	38-39	➔
Labour Market Information	40 - 41	➔
FAQs	42	➔
The Arts	9-11	➔
Business and Accounts	12-13	➔
English	14	➔
Nutrition & Food Science / Health and Social Care	15-16	➔
History, Geography and Politics	17-19	➔
ICT	20	➔
Mathematics	21	➔
Modern Languages	22-24	➔
Religion	25	➔
Sciences	26-28	➔
Sociology & Psychology	29-30	➔
Sport	31	➔
Technology, Engineering and Construction	32-34	➔

Welcome

Welcome to St Louis Grammar School 6th Form.

If you are completing your GCSEs this summer it is time for you to make some very important decisions about your future. We hope that this prospectus will provide the information you need to make the right choices.

St Louis 6th Form is open to all 16+ learners in the local area and beyond who meet the entrance criteria. This year we are offering a range of new and exciting flexible qualifications with clear pathways into third level education or the world of work. We aim to promote open and co-operative learning through the use of new technologies.

Our expert staff offer high quality teaching, guidance and support to enable you to reach your full potential in a caring environment.

Whether you wish to study academic or applied / vocational qualifications, St Louis 6th Form is for you! You can choose from a wide range of courses and study them here or for some courses in our partner schools.

We have invested heavily in new resources in order to make your time in 6th form an enjoyable and rewarding one.

Key Contacts

Principal Mr Kevin Martin

Vice Principal Miss Louise Carr

Head of 6th Form Mr Eamonn McGlue

Head of Careers Mrs Julie Devlin

Address 151 Newry Road, Kilkeel, BT34 4EU

Websites www.stlouis6thform.com

www.stlouis.org.uk

Email info@stlouis.org.uk

Tel 028 4176 2747

Fax 028 4176 5694

Twitter @stlouisgrammar

YouTube www.youtube.com/stlouisgrammarschool

© St Louis Grammar School 2017-2018

Our Aims

St Louis Grammar School is a Catholic community within which both staff and students work in the pursuit of all aspects of spiritual, educational and personal excellence.

We aim to:

- Help pupils to grow in the Catholic faith
- Provide a happy, caring and stimulating learning environment
- Provide a broad, balanced, coherent and relevant curriculum
- Establish and develop a partnership between pupils, parents and teachers
- Help pupils understand the world in which they live, to make informed decisions about their lives and to prepare them for the future

The education of sixth form students at St Louis Grammar School is regarded as a three way partnership between the school, the student and their parents / guardians.

The school is obliged to run courses in a cost-effective manner. Therefore the school reserves the right to not offer courses listed in this prospectus if there is insufficient uptake.

Choosing the right course for you

Pupils who meet the full entry requirements will be expected to take 4 AS levels or equivalent in the first year. Alternatively you can choose a more vocational path by studying

BTECs / OCR Cambridge Technical / AQA Level 3 Certificates or other vocational A Levels and combine these to a maximum of 4 A level equivalents in the first year. One or more A levels may be taken with our educational partners, Kilkeel High School and the SRC. Please take the time to read carefully the requirements for each course.

Post 16 Courses

AS Level: This is a one year linear course composed of two or three units. Most courses are assessed by examination or coursework or a combination of both. This is graded A-E.

A2 level: In the second year you take two or three units and are awarded the full A level which is graded from A*-E.

Linear A Levels

Some A Level subjects are now “**linear**” in structure, meaning that only the exams taken at the end of the two year specification count towards the final A level grade. For these subjects AS is now a stand alone qualification, worth 40% of full A level and can only be used if pupils exit the subject at end of AS.

However, whether or not pupils remain to complete the full A level, AS exams will be sat at end of AS, to form the basis of evaluating their progress in the subject; also, the content of these exams will be re-sat at the end of A2.

BTEC / Cambridge Technical / AQA Level 3 Certificates:

These Level 3 qualifications are mostly coursework based and are graded as Pass / Merit / Distinction / Distinction * which has equivalences to A level grades and UCAS points.

Level 2 / GCSE: Level 2 courses are the GCSEs / BTEC National Firsts / OCR Nationals / and other examinations you may have taken in St Louis or in your previous school.

Why BTEC / AQA Level 3 Certificates or Cambridge Technical?

This option offers a vocational route and a more enjoyable route for those who prefer a portfolio based course with only one exam-based module. Some pupils benefit greatly from opting for vocational courses as this raises their level of achievement.

If you enjoy a course and are confident that it matches your interest and suits your learning style then there is every chance that you will excel.

Entry to University courses can be gained by presenting high levels of achievement in a range of Level 3 qualifications. These include BTECs and other vocational offerings such as the OCR Cambridge Technical Introductory Diploma in IT and the AQA Level 3 Certificate / Extended Certificate in Applied Business.

BTEC National Subsidiary Diplomas / Cambridge Technical Introductory Diplomas consist of:

- 6 units of work
- Are portfolio based with one exam based module
- Are assessed over two years
- Each unit of work is graded Distinction, Merit or Pass
- An overall level is awarded after the portfolio is completed and assessed by an examiner. This will be an overall Distinction, Merit or Pass.

If you obtain an **Overall Distinction** in your BTEC National / Cambridge Technical, you may in some institutions be judged as having the **equivalent of an A Level grade A** and will be awarded the equivalent **UCAS points (48)**.

If you achieve an **Overall Merit** in your BTEC / Cambridge Technical, you may in some institutions be considered to have the **equivalent of an A Level Grade C** and will be awarded the **equivalent UCAS points (32)**.

Does Queen's University accept BTEC / OCR Cambridge Technical Awards / AQA Level 3 Certificates?

Yes - Queen's does not ask students to achieve UCAS points, they ask for grades or the grade equivalent. They do not focus on the overall level achieved - instead they will specify the exact number of Distinctions and Merits required for each unit. In general 6 Distinctions are considered equivalent to an A at A level. 3 Merits and 3 Distinctions considered a B.

Does the University of Ulster accept BTEC / OCR Cambridge Technical awards and AQA Level 3 Certificates?

Yes - The University of Ulster accepts BTEC Subsidiary Diplomas / Cambridge Technical Level 3 Introductory Diplomas and the AQA Level 3 Certificates. The Admissions Department will specify the exact number of Distinctions and Merits required for each unit. In general 5 Distinctions and 1 Merit is considered equivalent to an A at A level. 3 Merits and 3 Distinctions considered a B.

Who should be cautious about selecting a BTEC?

- Students hoping to study at a University in the Republic of Ireland (ROI)
- Students hoping to embark on a degree courses in Medicine, Dentistry and Veterinary Science at UK Universities.
- Students hoping to study at Oxford or Cambridge.

Who should not take more than one BTEC option?

- Students hoping to gain a place at St Mary's University College, Stranmillis College or another teacher training college in the UK.
- Students considering degree courses in Queen's where it is not permitted to take more than one applied subject / course.

Post 16 Courses

A Level

- Accounts
- Art and Design
- Biology
- Business studies
- Chemistry
- English Literature
- French
- Geography
- Health and Social Care
- Nutrition and Food Science
- History
- Irish
- Mathematics
- Moving Image Arts
- Music
- Physics
- Politics
- Religious Studies
- Sociology
- Spanish
- Technology and Design

BTEC

- Construction Subsidiary Diploma
- Engineering Subsidiary Diploma
- Music Technology Subsidiary Diploma
- Sport Subsidiary Diploma

Other

- OCR Cambridge Technical Level 3 Introductory Diploma in ICT
- AQA Level 3 Extended Certificate in Applied Business

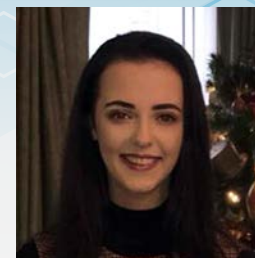
Levels

Pupils achieving 7+ A*-C are expected to take 4 AS levels, or BTEC / Applied equivalents, in Lower 6th.

Pupils who do not achieve these grades can make an appointment via the school office to arrange an interview with the Principal. If successful you will be expected to take 3 qualifications, and complete the CoPE Level 3 Award (Certificate of Personal Effectiveness). This qualification is worth 16 UCAS points.

Pupils can take a combination of AS Levels and BTECs or Applied courses to a maximum of four subjects. Pupils should get advice from teachers and the Head of Careers before making their choices.

Pupil Profile



Name Caitlin Sands

Age 19

University MEng Mechanical Engineering at QUB

A Levels Achieved

Design & Technology - A / Engineering - A* / Mathematics - A / Physics - A

"I thoroughly enjoyed my time at St Louis, making great friends and unforgettable memories."

I followed the STEM route through my A levels as I knew that is what I wanted to pursue in the future. The teaching I received at St Louis helped me build the foundation which I need for my future studies in Engineering.

The teaching and extra-curricular activities helped me prepare for university, both academically and socially, gaining the skills I needed to tackle my course head on to meet new people, both on my course and in my halls.

I value everything I learnt at school and would not be where I am today without St Louis."

Why Choose us?



"I want the best facilities while I study"

We have dedicated study facilities for 6th formers with a supervised study room, common room and computers exclusively for your use.

"I want to get into a good university"

Many of our pupils achieve excellent results and go on to study successfully in QUB, UU, other Irish universities and many UK universities including Oxbridge.

"Is it easy to settle in?"

We warmly welcome students from other schools into the 6th form and they consistently report that they find it easy to make new friends and to fit in.

"I'm not sure what to do in the future"

Our careers staff offer comprehensive and impartial advice and 6th form pupils have dedicated tutorials once a week to support career planning and the UCAS, CAO, Higher Apprenticeship and Post 18 Employment and Training Application Processes.

"What support will I get while studying?"

You will have a tutor, a Year Head, and the Head of 6th form to help you with your studies.

"What are the staff like at St. Louis?"

Our well-qualified, experienced staff are friendly, helpful and approachable.



IT Suites

The school has five well equipped ICT rooms as well as iPads for class use and laptops and computers in the study room.

6th formers have exclusive access to computers in the study room and these can be booked during study periods. Pupils studying ICT / SSD, Technology, Construction, Engineering and Music or Music Technology may have additional periods booked into the ICT facilities.

Pupils are also allowed to use their own laptops or other suitable devices in the study room with permission. Using these devices pupils can access the school's wireless network to use the internet.

Pupils are given study periods in the study room when they are not attending lessons.

The study room is for quiet study or use of the ICT facilities. Pupils can also use their own laptops or suitable devices during this time.

Pupils may also listen to their own music.



Study Room

Pupils can access the common room during lunch and break times.

This is a time to relax from your studies and to socialise with your peers and catch up on the day's events.

6th formers also take on prefect responsibilities during break and lunchtime.



6th Form Formal

It is not just pupils who study PE at A level who have access to our own fitness suite. All pupils will be able to access the fitness suite during certain times and when booked with the study supervisor.

The suite features a range of professional equipment for your use. You may use the suite in your study periods.



Fitness Suite

Pupils in the Sixth Form are our next generation of leaders

Sixth formers are seen as role models and must therefore act responsibly at all times. You may also be asked to act as a mentor to younger pupils as well as take on whole school roles such as 'Prefect' which means additional responsibilities.

If you choose St Louis 6th form you have shown you have decided to further your learning and that you want to be here. Therefore you are expected to behave in a responsible manner at all times, to be punctual to school and to lessons, and to make good use of your spare time in the study room, fitness suite and common room facilities.

You are also expected to dress appropriately. A full list of school uniform for sixth formers is included in the welcome pack. Sixth formers should take pride in their appearance.

You are encouraged to give back, to volunteer, to take part, and to be all you can be!

As a St Louis Sixth Form pupil you are:

- Expected to work independently
- Expected to work corroboratively with staff and to show respect to teachers and fellow students
- Expected to succeed!

In order to succeed in sixth form, pupils should be aware of the 'achievement triangle'. The three points of the triangle can help lead to overall success.

Ability Not all pupils start with the same ability, but this will develop over the duration of the course provided you study effectively.

Attendance There is a link between attendance and achievement. Every lesson missed may contain vital information required for exams.

Attitude Pupils must want to succeed - you simply cannot afford to take a passive approach to your studies.



“ My time at St Louis is near the end, but I will never forget the everlasting, fantastic moments over my last 7 years.

As head boy of St Louis Grammar School, the opportunities presented to me have been amazing. I have made friends that I will treasure for life, participated in numerous sporting activities, attended trips that I will never forget, made countless memories and most importantly received an excellent education.

I would like to encourage all young children entering St Louis, not to be afraid of their transition but to enjoy every moment of their school life, as it passes so quickly.

Rory Quinn - Head Boy ”

“ Being presented with the role of Head Girl of St. Louis was one of my major accomplishments in my past 7 years here. St. Louis was the basis of where I found my confidence, and where it thrived. I aspired to be head girl as St. Louis has given so much to me through learning, football and the sense of welcome it gives to each student. I believed through this new role I could try give back to the school which set me up for my future. Deciding to come to St. Louis was one of my best decisions, I have gained the skills and qualities needed for continuing on my journey to university and made friendships and connections I will keep for life.

Emma McVeigh - Head Girl ”

A Level Art and Design

Why choose GCE Art and Design?

The creative industries are a fast-growing area of the economy and are key to economic success. Northern Ireland and the UK have an established reputation in these industries. The study of Art and Design creates a pathway to a future career in a creative-industries related field. This specification is designed to broaden and deepen knowledge, skills and contextual understanding of a range of art, craft and design disciplines. It prepares students for further study in art and design or in a related field.

This qualification is designed to promote and reward:

- Independent learning;
- Personal development and motivation;
- The ability to make creative connections, find alternative approaches and take risks in creating art and design work; and
- Aesthetic awareness and intellectual capabilities.

Art and Design A Level Entry Requirements

7 GCSEs A*-C including English, Maths and a minimum of grade B in Art.

“The Art and Design course at St. Louis allowed me to develop important skills and gave me the chance to work with different mediums. I was encouraged to work creatively in my own style.”

**Jennifer Hardy - Lead Graphic Artist
Climax Studios (Past pupil)**

”



This course can lead to:

Careers and further training in:

- Fine art
- Graphics design
- Interior design
- Illustration
- Fashion and textiles
- Photography
- Animation
- Theatre Design
- Three dimensional design

Higher education in:

- Pre-degree foundation courses in Art and Design
- Degree courses in Art and Design
- Other Degree courses in university

Creative jobs include:

Advertising; Graphic Design; Architecture; Printmaking; Teaching / Lecturing; Stage Design; Jewellery Design, Digital Multimedia, Fashion, Textiles.

Course Units - 2 at AS / 2 at A2

- **AS 1:** Experimental Portfolio
(50% AS / 20% A2)
- **AS 2:** Personal Response
(50% AS / 20% A2)
- **A2 1:** Personal and Critical Investigation
(60% A2 / 36% A Level)
- **A2 2:** Thematic Outcome
(40% of A2 / 24% A Level)

The Arts



A Level Music

Music - This course involves listening to, performing and composing music. A wide variety of instruments can be used in the performance aspect.

Do you enjoy performing and composing music? With 65% of the course based on these elements it's a good choice for you whether you wish to pursue a career in music as it will give you a good chance of a high grade. Any career in the Music Industry would be enhanced with Music A level and is essential for careers in teaching, performance and composing.

Course Units - 3 at AS / 3 at A2

- **AS 1:** Performing. Worth 32.5%.
- **AS 2:** Composing. 1 piece of coursework. Worth 32.5%
- **AS 3:** Responding to Music. 1 listening and 1 written exam paper. Worth 35%
- **A2 1:** Performing. Worth 32.5%
- **A2 2:** Composing. 1 piece of coursework. .Worth 32.5%
- **A2 3:** Responding to Music. 1 listening and 1 written exam paper. Worth 35%

A Level Music Entry Requirements

7 GCSEs A*-C including a GCSE in Music, good listening skills, and an interest in composing music of any style as well as the ability to play an instrument / sing to the equivalent of grade 5-8.



Both courses could lead to:

Careers in:

- Music Production
- Sound Engineering
- Music Performance / Composing
- Media

Higher Education courses in:

- Music Technology
- Music Education
- ICT / Media
- Popular music

BTEC Music Technology

BTEC Music Technology - A perfect choice for hard working students willing to develop their skills in music production through practical coursework based assignments and examinations.

Are you keen to create and record music? Are you interested in a career in the sound, music or the entertainment industry? Are you interested in learning how to use music technology to further develop your ICT skills? If yes then the A level in Music Technology is for you!

Pupils taking this course will use iMacs plus other recording equipment such as a digital mixing desk, microphones and amplifiers to compose their own music and develop music production techniques.

Units

- **Unit 25** - Music Production Techniques (Mandatory)
- **Unit 2** - Audio Engineering Principles
- **Unit 9** - Delivering a music product
- **Unit 17** - Marketing and promotion in the music industry
- **Unit 32** - Sequencing Systems and Techniques
- **Unit 39** - The sound and music industry

Music Technology A Level Entry Requirements

7 GCSEs A*-C including good listening skills, a grade in an instrument or voice OR an interview with the Music Technology staff. Whilst a grade in an instrument is not required, the course involves computer-based music composition so therefore good ICT and music keyboard skills are desirable.

The Arts



Music



MTECH



A Level Moving Image Arts

Moving Image Arts - this qualification is designed to help students develop their creative and critical abilities through hands on learning in the craft of moving image arts.

Moving image is a key driver of the creative industries. The rapid growth of digital media technologies has made the creative industries increasingly accessible and attractive to young people. Through the study of Moving Image Arts you will:

- Critically analyse and evaluate moving image products and texts, demonstrating knowledge and understanding of film language, forms, conventions, purposes, meanings and context.
- Show understanding of the film-making techniques and working methods used by historical and contemporary film-makers / animators in relation to their goals.
- Develop and apply ideas through investigation and experimentation with film-making techniques and processes.



This course could lead to careers in:

- TV production
- Video editing
- Print Journalism
- Advertising
- Programme Researcher
- Broadcast Journalism
- Public relations
- Market researcher
- Television / Film / TV producer
- Film industry
- Online advertising and media

Course units at AS:

- **Unit 1 - Creative productions:**
Foundation portfolio - This coursework unit enables pupils to explore film language, film planning and film production (70% of AS)
- **Unit 2 - Critical response** - Pupils will critically analyse three unseen moving image clips chosen from two compulsory moving image art forms: Film and Animation (30% of AS)

Course units at A2:

- **Unit 3 - Creative production:**
Advanced Portfolio - This coursework unit further enables pupils to explore Film Language, Film planning and Film Production (70% of A2)
- **Unit 4 - Critical Response and Specialisation**
- Pupils will further critically analyse three new unseen moving image clips chosen from two compulsory moving image art forms: Film and Animation (30% of A2)

For the coursework students must create an original and complete film or animation. Whilst you are free to choose an initial idea or theme as a starting point for your work, you must work formally and stylistically within the conventions of the chosen art form. This includes written elements.

A Level Moving Image Arts Entry Requirements:

7 GCSEs A*-C - A good grade in GCSE English / English Literature. A GCSE in Media Studies would be helpful but not essential.



A Level Business Studies

Business Studies gives insights into how and why businesses operate. It helps you to develop understanding of how decisions are made and how they affect people. The course covers a broad range of business related topics and enables students to understand the wide, varied role of business in today's society.

This course helps to develop understanding that is invaluable to those students who are approaching the workplace.

Course Units - 2 at AS / 2 at A2:

- **AS 1:** Introduction to Business (20%)
- **AS 2:** Growing the Business (20%)
- **A2 1:** Strategic Decision Making (30%)
- **A2 2:** The Competitive Business Environment (30%)

All units are exam based.

A Level Business Studies Entry Requirements

7 GCSEs A*-C including English and Maths. Business Studies Grade B is required or grade B in English or related subject.

Both courses could lead to:

Careers in:

- Starting your own business
- Marketing
- Sales
- Finance

- Accountancy

- Personnel Management

Higher Education courses in:

- Business and management degrees
- Business and IT



Applied Business

The Level 3 Extended Certificate in Applied Business from AQA will suit those pupils who excel at coursework. Pupils who have taken the Applied option in the past have achieved excellent results.

Mandatory Units:

- **Unit 1** - Financial Planning and Analysis (Exam)
- **Unit 2** - Business Dynamics (Coursework)
- **Unit 3** - Entrepreneurial Opportunities (Controlled assessment)

At A2 you must complete the following mandatory units:

- **Unit 4** - Managing and Leading People (Exam)
- **Unit 5** - Developing a business proposal (Coursework)

Your teacher will choose from the following optional units:

- **Unit 6** - e-Business implementation (Coursework)
- **Unit 7** - Managing an event (Coursework)
- **Unit 8** - Marketing Communications (Coursework)

Business and Accounts



A Level



Applied



A Level Accounts

Accounts A Level helps you to develop:

- Knowledge and understanding of the purposes of accounting, its concepts and techniques and their development as well as an appreciation of the limitations of accounting
- An appreciation of the effects of economic, legal and technological change on accounting, and of the social implications of accounting decisions
- The skills of communication, numeracy, presentation, analysis, interpretation, application and evaluation of accounting information

A genuine interest in the business world and the financial aspects of business will lay a foundation for studying Accounting at A Level. IN particular, the subject will appeal to students who have sound numeracy skills and a reasonable standard of written English, who can grasp and apply concepts and rules.

A Level Accounts Entry Requirements

7 GCSEs A*-C including a GCSE in English and Mathematics. A grade B or above in Mathematics is expected.

Both courses could lead to: Careers in:

- Starting your own business
- Finance
- Accountancy
- Actuary and Financial Services
- Banking

- Management / Consultancy

Higher Education courses in:

- Business and management degrees
- Accountancy / Actuary / Finance

Direct career entry route through a higher apprenticeship is also an option



Course units - 2 Exam papers

- **Unit 1: 3 hour paper 50% of qualification**
- **Unit 2: 3 hour paper 50% of qualification**

Both exams include a combination of multiple choice, short answer, structured and extended answer questions.

Accounting stresses the importance of discipline in terms of accuracy and presentation, leaving you to interpret financial positions in your own original fashion.

You will gain a very firm understanding of the wider business environment. You will gain an understanding of how financial control is vital to business success and how, without it, even profitable firms can fail.

In addition to the above accounts can offer:

- Excellent job prospects
- Can assist in a range of careers in industry
- No matter what profession you enter, once you progress up the ranks of the organisation you will assume responsibility for budgets and management of finance.

“ The A Level accounting course provided me with a solid foundation upon which to build whilst studying Business and Accounting and Finance at degree level. The A Level syllabus covered two of the first year modules, and it is these fundamentals which I feel gave me a head start in my degree

Eoin McClean - Past Pupil

Business and Accounts



”

A Level English Literature

Do you want to:

- Understand the meaning of life?
- Read an exciting range of novels and poetry?
- Pursue a career in writing, law, the arts or journalism?

If yes then AS / A2 English is for you!

Through engagement with classic and modern texts you will arrive at an understanding of human behaviour and develop your creative writing and communication skills. Visits to the theatre and poetry readings will introduce students to a new literary world and bring the subject alive!

English literature is recognised by all universities as an excellent grounding for most academic disciplines.

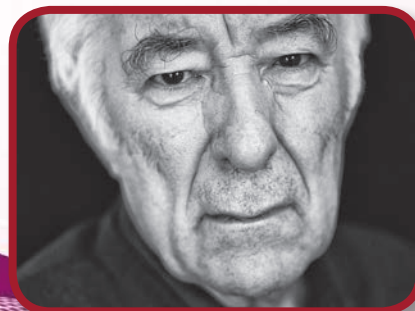
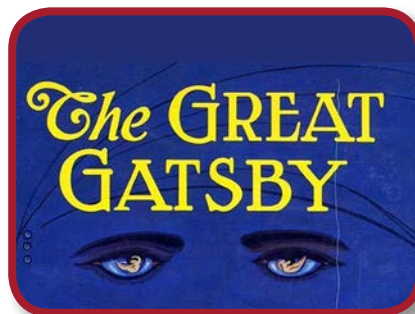
A Level English Entry Requirements

7 GCSEs A*-C including a GCSE in English Literature and Language at a minimum at Grade B.

This course could lead to:

Careers in:

- Any field where communication skills are highly valued
 - Journalism
 - Media (Print / Web / Film / Theatre)
 - Law
 - Teaching
 - Public Relations...
- ...and of course the opportunity to become an award winning poet or novelist such as Eoin McNamee - one of our eminent past pupils.



“Really enthusiastic teaching gives you a passion for, and understanding of literature.”

Course Units - 2 at AS and 2 at A2

- **AS 1:** The study of Poetry 1900 - Present and Drama.
Exam
(60% of AS, 24% of A Level)
- **AS 2:** The study of Pre 1900 Prose.
Exam
(40% of AS, 16% of A Level)
- **A2 1:** Shakespearean Genres
Exam
(20% of A Level)
- **A2 2:** Study of Poetry pre 1900 and Unseen Poetry.
Exam
(20% of A Level)
- **A2 3:** Internal Assessment
(20% of A Level)

“ Books are the carriers of civilisation
Barbara W Tuchman

”

You will:

- Study a variety of texts in a vibrant and creative atmosphere
- Give creative and informed responses to texts
- Demonstrate detailed critical understanding
- Explore connections between texts
- Demonstrate understanding of the significance and influence of context

“ We drink them up like water, and are bettered, yet we know not how
Robert Louis Stevenson on books

”

English



A Level Nutrition and Food Science

A Level Home Economics has now been replaced with GCE Nutrition and Food Science:

- Two year course
- Three Exams
- One piece of Coursework

Why do some foods help reduce the likelihood of heart disease and cancer? How can we best supply healthy, safe food to billions of people worldwide? Are we making any progress against fighting obesity and malnutrition?

By selecting GCE Nutrition and Food Science you will discover the answer to these questions, and many more through varied, interesting and challenging learning experiences. These include: theoretical and realistic applications, seminars, guest speakers and the use of the internet as a research tool.

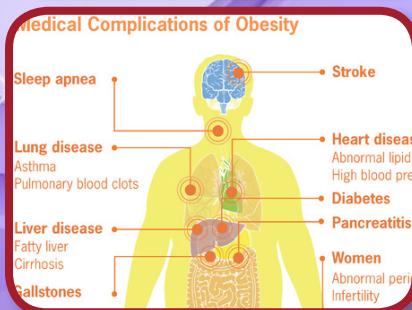
Nutrition and food science is currently high in the public's perception and there could not be a better time to develop knowledge and understanding of the subject, given current global and national food issues.

A Level Nutrition and Food Science Entry Requirements

7 GCSEs A*-C including Home Economics or Child Development or Biology, English and Maths.

The course could lead to careers in:

- | | | |
|-----------------------------|---------------------------------|--------------------------------|
| • Consumer Studies | • Development | • Environmental Health |
| • Dietetics | • Food Management and Marketing | • Nursing |
| • Food Design and Nutrition | • Food Manufacturing | • Food Science and Technology |
| • Food product | • Physiotherapy | • Consumer Business Management |
| | • Human Nutrition | • Medicine |
| | • Biology | |



Course - 2 units at AS and 2 units at A2

- **AS 1 - Principles of Nutrition:** 1 hour 30 minutes exam. Completed in Year 13. Worth 80 Marks.
- **AS 2 - Diet, Lifestyle and Health:** 1 hour 30 minutes exam. Completed in Year 13. Worth 80 Marks.
- **A2 1 - Option A: Food Security and Sustainability OR Option B: Food Safety and Quality:** Teacher chooses either Option A or Option B to study at A2 year. 2 hours 30 minutes exam. Completed in Year 14. Worth 85 Marks.
- **A2 2 - Research Project:** Internal Assessment. Students complete a 4000 word research based project. Teachers mark the projects and CCEA moderate the results.

“ I chose to do NFS for A Level as I always enjoyed learning about nutrition during GCSE Home Economics and the food and nutrition industry intrigued me. I loved the fact that there was a wide range of topics involving Nutrition and Consumerism. I thoroughly enjoyed all aspects of the course. ”

Ellen Boden. Past Pupil

Nutrition and Food Science and Health and Social Care



A Level Health and Social Care

The A Level in Health and Social Care has been developed to:

- Equip students with knowledge, understanding and skills for success in employment in the health and / or social care sector
- Provide specialist studies relevant to health and social care progressions
- Develop the ability of learners to contribute to the health and social care environment through effective use and combination of the knowledge and skills gained in different parts of the programme
- Develop skills and techniques, and personal qualities and attitudes essential for successful performance in working life and thereby enable learners to make an immediate contribution to employment.



A Level Health and Social Care Requirements

7 GCSEs A*-C including English and Mathematics. A GCSE in Child Development or Home Economics may be helpful though not essential.

This course could lead to:

- Nursing
- Health and Social Care
- Child Care
- Caring Profession
- Social Work
- Health promotion
- Lecturing
- Care Home Management
- Health and Safety Officer

There are many different areas of study depending on the units taken, some of the main areas include:

- Communicating in Health and Social Care Organisations
- Principles of Health and Social Care Practice
- Health and Safety in the Health and Social Care Workplace
- Personal and Professional Development in Health and Social Care
- Working in Partnership in Health and Social Care
- The Role of Public Health and Social Care
- Managing Financial Resources in Health and Social Care
- Influences on Health and Social Care Organisations
- Health Promotion

This qualification provides a thorough grounding in the key concepts and practical skills required in the Health and Social care sector and is recognised by employers. It also develops skills and techniques, and personal qualities and attitudes essential for successful performance in working life.

**Nutrition and Food Science
and Health and Social Care**



A Level History

GCE History can help develop and deploy a range of important skills such as collecting and evaluating information, independent thought, weighing up the evidence that you have found and putting a case together to support your conclusions.

By studying History you will be able to build upon your knowledge and understanding of past events and the impact those events have on our world today.

This in turn gives you a better understanding of the consequences of past actions on civilisations and a greater empathy for people of different cultures today.

History can open up a wide range of opportunities for further and higher education and interesting and rewarding careers.

History is much more than reading about past events!

A Level History Entry Requirements

7 GCSEs A*-C including English. Students should have obtained at least a grade B in History at GCSE.

This course could lead to careers in:

- Media
- Politics
- Library or information work
- Writing or editorial work
- Teaching
- Lecturing
- Business
- Civil Service / Solicitor / Barrister
- Archaeologist
- Archivist
- Historical Researcher



Course Units - 2 at AS and 2 at A2

In each of the units at AS and A2 there are a number of options and you will study one option in each unit. The units are assessed through examinations.

- **AS 1:** Historical investigations and interpretations - Germany 1919 - 1945
- **AS 2:** Conflict and Change in Europe and Russia 1914 - 1941
- **A2 1:** Change over time - Clash of Ideologies 1900 - 2000
- **A2 2:** Historical investigations and interpretations - Partition of Ireland 1905 - 1923

Results

A Level History results are excellent with a pass rate of 100% A*-C over a number of years.

70% of students achieved A*/B in 2018.

“ We are not makers of History.

We are made by History.

Martin Luther King

”



A Level Geography

Geography offers students the opportunity to examine the way in which we interact with our physical environment.

Aspects of Human Geography will be studied with a particular focus on the evaluation of initiatives to address issues in our society. Students will also gain valuable field work and decision making skills.

In order to obtain good results students must become familiar with the specifications, develop a high level of note-taking and case study development and to develop an effective approach to examinations utilising past papers and mark schemes.

It is the skills of data handling and the insight into decision makings as well as the specialist knowledge and understanding of the interactions between the physical and human world which can lead to a variety of career pathways.

A Level Geography Entry Requirements

7 GCSEs A*-C including GCSE Geography



Course Units - 2 at AS / 2 at A2

- **AS 1:** Physical Geography - Includes Fieldwork Skills.
1 hour 30 minute examination and includes assessment of field work
- **AS 2:** Human Geography - Including skills and techniques.
1 Hour 30 minute examination including assessment of skills and techniques
- **A2 1:** Human Geography and Global Issues
1 hour 30 minute examination paper
- **A2 2:** Physical Geography and Decision Making.
2 hour and 30 minute external exam which includes a decision making exercise.

You will develop wide ranging skills:

- Use of statistics and data analysis
- Graphic representation of data
- Interpretation of maps and diagrams
- Field work
- Data collection and methods
- Conducting enquiries and drawing conclusions.

This course could lead to:

- Teaching
- Environment Planning
- Land Surveying
- Marketing
- Town and Country Planning
- Traffic Management
- Travel and Tourism
- Natural Conservancy
- Finance
- Public Relations

“ Geography proved to be more than just a subject to be studied at A Level. I soon realised its relevance to every aspect of everyday life.
Past Pupil ”



A Level Government and Politics

Government and Politics: Do you want to understand how decisions are made in the modern world? If you do, then Government and Politics is for you.

If you have an interest in finding out more about political systems and ideas and how political change can be brought about, then this course can help you achieve this.

The course will help to develop your knowledge and understanding of political systems and who has the authority and power to make political decisions.

You will learn about individual rights and responsibilities and compare how government works in different countries.

This course is perfect for pupils who enjoy analysing and evaluating information, using source material and weighing up arguments.

A Level Government and Politics Entry Requirements

7 GCSEs A*-C including English. You should have obtained at least a Grade B in GCSE English.

This course could lead to:

- Law
- Business
- Finance
- Government services
- Education
- Journalism
- Public relations
- Political research
- The Media

This course is well regarded by universities and employers.



Course Units - 2 at AS and 2 at A2

In each of the units at AS and A2 there are a number of options and you will study one option in each unit.

The units are assessed through examinations.

- **AS 1:** The Government and Politics of Northern Ireland
- **AS 2:** The British Political Process
- **A2 1:** Comparative Government: The UK and Ireland
- **A2 2:** Political Power

Past results

A Level Politics results are excellent with a pass rate of 100% A*-C over a long number of years. In 2017 and 2018 100% of students achieved A*-C.

The study of Government and Politics encourages you to become actively involved as a citizen and helps you to develop your critical thinking and communication skills.

The course can provide a sound foundation for further study of politics and related courses in higher education.

“ I have come to the conclusion that politics is too serious a matter to be left to the politicians.

Charles de Gaulle



Cambridge Technical Level 3 in IT

The Cambridge Technical in IT Level 3 will suit pupils who excel in coursework. There are no exams - it is 100% coursework and fully practical.

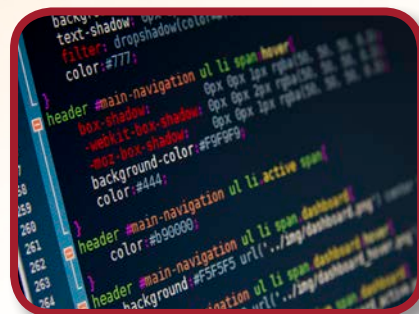
This course aims to develop skills in the use of office software as well as graphic design, web design, games programming and multimedia software.

There are 6 coursework units that will allow you to gain a range of IT skills in industry contexts.

Work is assessed by the teacher, and moderated by the examination board. The work for each unit is graded as either a Pass (E grade), Merit (C grade) or a Distinction (A grade). which is similar to a BTEC qualification.

Overall pupils are awarded a grade based on the combination of grades for each unit. For example, a pupil who gains 6 distinctions will be awarded an overall Distinction * (A* grade) which is the equivalent to 56 UCAS points.

This post-16 qualification will suit those who have studied GCSE ICT, GCSE Computing or GCSE Digital Technologies though a GCSE in these subjects is desirable, not required.



This course could lead to careers in:

- IT
- Computing
- Business and Business Management
- Media
- Web / Multimedia design
- Software Development
- Games Design
- Programming
- Business Management
- Computer Science

Units

- **Unit 1: Communication and Employability Skills for IT** - in this unit you will investigate the desired skills required by employers in relation to the IT sector through a range of practical tasks (Mandatory).
- **Unit 2: Information Systems** - in this unit you will understand the information organisations hold and how this is utilised to the benefit of the organisation. This includes investigation of the relevant legislation involved in the handling of information (Mandatory).
- **Unit 10: Developing Computer Games** - in this unit you will study the history of the gaming industry including the impact that the gaming industry has had on society. You will produce and test a multilevel game.
- **Unit 12: Website Production** - in this unit you will study web architecture and components that support web site production as well as the factors that influence website performance including security. You will also produce a multi-page professional website.
- **Unit 17: Interactive Media Authoring** - this unit focuses on the creation of an interactive media product that utilises video, sound, text and animation using a suitable authoring tool.
- **Unit 19: Spreadsheet Modelling** - in this unit you will learn how to create spreadsheet tools for industry contexts.



Applied
ICT



A Level Mathematics

Do you wish to:

- Show prospective Universities that you are prepared to commit to studying a demanding subject.
- Choose a subject that will support your study of other subjects, particularly the sciences, Economics, and Business Studies.
- Develop your analysis and problem-solving skills and improve your overall mental agility.

If so then A Level Mathematics is for you! In the past fifty years, old and new applications of mathematical ideas have transformed the way we live.

Mathematics A Level is well respected by employers and admissions tutors for all degree subjects.

A Level Mathematics Entry Requirements

7 GCSEs A*-C including a grade B or above in GCSE Mathematics / Further Mathematics.

This course could lead to careers in:

- Finance
- Statistics
- Engineering
- Business, Computing and ICT
- Teaching
- Accountancy
- Mathematical Biology
- Law
- Actuarial Science
- Research Mathematician
- Investment Banking



Course Units

At AS Pupils will sit two papers in May / June:

- **Paper 1:**
(Pure mathematics) 66.66%
Covering areas such as proofs, algebra and functions, Coordinate geometry, Sequence and series, Trigonometry, Exponentials and logarithms, vectors and calculus.
- **Paper 2:**
(Mechanics and Statistics) 33.33%
Covering areas such as sampling, presenting and interpreting data, Probability, statistical distributions and hypothesis testing, Kinematics, Forces and Newton's laws.

Note: This is a stand alone AS qualification.

At A2 students will sit three papers in May / June of their final year:

- **Paper 1 and Paper 2:**
(Pure mathematics) 66.66%
Covering areas such as proofs, algebra and functions, Coordinate geometry, Sequence and series, Trigonometry, Exponentials and logarithms, vectors, calculus and numerical methods.
- **Paper 3**
(Mechanics and Statistics) 33.33%
Covering areas such as sampling, presenting and interpreting data, Probability, statistical distributions and hypothesis testing, Kinematics, Moments, Forces and Newton's laws

Note: This is a linear A Level qualification.

See page 3 for more details.



A Level French

French: This subject is a must for pupils who derive enjoyment and benefit from learning a language.

Through studying GCE French, students have the opportunity to:

- Develop an understanding of the language in a variety of context and genres
- Communicate confidently, clearly and effectively in the language for a range of purposes
- Develop awareness and understanding of the contemporary society, cultural background and heritage of countries or communities where French is spoken
- Consider their study of the language in a broader content.

A Level French Entry Requirements

7 GCSEs A*-C including English, Mathematics and French. A B or above is required in GCSE French.

This course could lead to:

- International Business
- European Business
- Education
- Translation work and interpreting
- Sales and Marketing
- Journalism
- Law
- Travel and Tourism
- Any field where communication skills are valued



Course Units - 2 at AS and 2 at A2

- **AS 1:** Speaking - this unit consists of two elements.

Q1: Presentation

Q2: Conversation

These tasks are Externally conducted and assessed.

- **AS 2:** Listening, Reading and Writing - This unit consists of three elements:

Section A: Listening

Section B: Reading and translation
(French to English)

Section C: Writing

There are also three units and two topic areas at A2.

AS Topic Areas:

- Relationships: Family life and relationships; Personal and interpersonal relationships
- Culture and Lifestyle: Physical and Mental well-being; Hobbies and interests; The Arts, New technology and Tourism.

“

Studying French helped to build my confidence and communication skills which helped me not only in my school work, but also in my wider life

”

Mathew Rickard, past pupil



A Level Irish

Studying Irish will give you a fascinating insight into the world of Irish while also giving you a true sense of identity as an Irish citizen,

During the course you will:

- Develop the ability to communicate confidently and effectively in Irish in both speech and writing.
- Learn about the contemporary society, cultural background and heritage of Ireland and communities where Irish is spoken.
- Develop personally by strengthening your confidence and helping you gain a positive attitude to learning and independent study.
- Draw together different areas of linguistic skills and understanding while developing high order thinking skills.
- Explore and discuss contemporary societal and political issues through the medium of Irish.
- Explore an aspect of Irish society and Irish literature.
- Experience life in the heart of the Donegal Gaeltacht.

A Level Irish Entry Requirements

7 GCSEs A*-C and at least a grade B in Irish.



This course could lead to:

- | | |
|--------------------------|----------------------------|
| • Teaching and lecturing | • IT |
| • Tourism | • Journalism |
| • Government | • The Media and Television |
| • Marketing | • Translating |
| • Financial Services | • The security Services |
| | • International Business |

At AS you will study the following topic areas:

- Relationships
- Culture and lifestyle
- Irish Grammar

This will be assessed through:

- **Unit 1:** Speaking. This unit consists of a three minute presentation based on one of the topic areas followed by a general conversation for eight minutes.
- **Unit 2:** Listening, Reading comprehension, translation from Irish to English and English to Irish and use of language.
- **Unit 3:** Writing – one extended writing question based on an Irish film or literary text.

The AS Irish course is worth 40% of the full A level qualification, A2 is worth 60%.

At A2 you will study the following topic areas:

- Young people in society
- Our place in a changing world

This will be assessed through:

- **Unit 1:** Speaking. This unit consists of a six minute discussion based on a research project followed by a general conversation for eight to ten minutes. Topics for the research project include Irish culture, the study of a region of Ireland or a historical period in the 20th century.
- **Unit 2:** Listening, Reading comprehension, a summary question and translation from English to Irish.
- **Unit 3:** Writing – one extended writing question based on a literary text. The literary text will be a poetry collection, a play or a collection of short stories.



A Level Spanish

GCE Spanish:

- Will give you a fascinating insight into the world of Spanish, whilst developing the ability to communicate confidently and effectively in Spanish in both speech and writing
- You will also learn about the contemporary society, cultural background and heritage of not only Spain but of other countries and communities where Spanish is spoken
- Your own personal development will also benefit greatly from taking GCE Spanish. It will strengthen your confidence and help gain a positive attitude to learning and independent study
- The AS units can be taken separately as a stand alone qualification or you can combine with the A2 units to gain the full A level qualification.

A Level Spanish Entry Requirements

7 GCSEs A*-C including a grade B in Spanish.

This course could lead to:

- Tourism
- Government and Marketing
- Financial Services
- IT
- Journalism

- Translation work and interpreting

Higher Education in:

- Teaching
- Spanish Degree



“ Studying Spanish has allowed me to develop my linguistic and communication skills...thanks to school trips and the support of the language teachers.
Megan Herron,
Past Pupil

”

At AS you will study the following topic areas:

- Relationships
- Culture and lifestyle
- Spanish Culture

This unit will be assessed through:

- **Unit 1:** Speaking. This unit consists of a three minute presentation based on one of the topic areas related to an aspect of a Spanish-speaking country followed by a general conversation for 8 minutes.
- **Unit 2:** Listening, Reading comprehension, translation from Spanish to English and English to Spanish and use of language.
- **Unit 3:** Writing. This consists of one extended writing question based on a Spanish film or literary text.

The AS Spanish course is worth 40% of the full A Level qualification, A2 is worth 60%.

At A2 you will study the following topic areas:

- Young people in society
- Our place in a changing world

This unit will be assessed through:

- **Unit 1:** Speaking. This unit consists of a six minute discussion based on a research project followed by a general conversation for 8 to 10 minutes. Topics for the research project include a cultural aspect of a Spanish-speaking country, the study of a region of a Spanish-speaking country or a historical period in the 20th Century of a Spanish-speaking country.
- **Unit 2:** Listening, Reading comprehension, translation from English to Spanish.
- **Unit 3:** Writing. This consists of one extended writing question based on a set literary text.



A Level Religious Studies

Religion plays an important role in our society and can influence what people think, feel and believe. While studying this A Level, students get a broad look at how religion and spirituality form the basis of our culture.

Course Units:

- **AS 1** : The Celtic Church in Ireland
- **AS 2** : Religious Ethics: Foundations, Principles and Practice
- **A2 1** : Themes in Celtic Church; Reformation and Post Reformation Church
- **A2 2** : Ethics and society

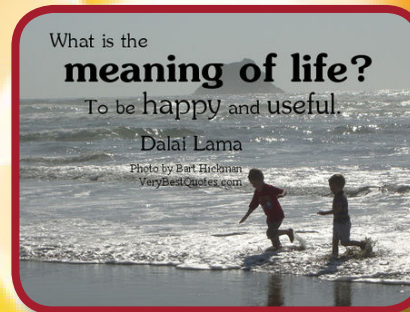
Choosing Religious Studies will give students a much better understanding of themselves and the society in which we live. Religious studies requires students to be logical, open minded and analytical in thought.

A Level Religious Studies Entry Requirements

7 GCSEs A*-C. Due to the specific nature of RE A Level it is essential that students achieve at least a grade B in both English and Religious Education at GCSE. Competency and fluency in essay writing is necessary to succeed.

This course could lead to:

- Teaching
- Nursing
- Law
- Social Work
- Health Care
- Counselling
- Marketing
- Psychology
- Journalism
- Youth and Community work
- Theology



The skills involved in completing an A Level in Religious Studies include:

- Research skills
- Critical judgement
- The ability to work with abstract, conceptual ideas
- An ability to understand both sides and negotiate and resolve conflict
- Problem solving skills
- An appreciation of human diversity, belief systems, cultural and spiritual experiences

At present the year 14 Religious Studies students are hoping to pursue careers in:

- Veterinary Medicine
- Physiotherapy
- Nursing
- Accountancy
- Teaching and politics

They have commented:

“ Religious Studies helps in ethical decision making and improves research and critical thinking skills, which is a quality desired by many employers and universities.

Past pupil

”



A Level Biology

Do you wish to:

- Develop your interest in and enthusiasm for Biology, including developing an interest in further study and careers in the subject?
- Appreciate how society makes decision about scientific issues and how the sciences contribute to the success of the economy and society?
- Develop and demonstrate a deeper appreciation of, and understanding of, how living organisms interact?

Then A Level Biology is for you! Choose Biology if you want to:

- Work in well-equipped specialist rooms
- Be taught by well qualified staff, experienced in teaching at this level and in preparing students for medical school and related opportunities.

A Level Biology Entry Requirements

7 GCSEs A*-C including a GCSE grade B or above in Biology. A Grade B or above in Chemistry would also be useful.

This course could lead to:

- Research
- Health Care
- Environmental management and Conservation
- Education
- Biotechnology
- Forensic Science
- Politics and Policy
- Business and Industry
- Economics
- Science writing



Course Content - 3 at AS and 3 at A2

- **AS 1:** Molecules and Cells
- **AS 2:** Organisms and Biodiversity
- **AS 3:** Practical Skills in AS Biology
- **A2 1:** Physiology, Coordination and Control and Ecosystems
- **A2 2:** Biochemistry, Genetics and Evolutionary Trends
- **A2 3:** Practical skills in Biology

Studying Biology helps us to understand the changes happening in our society and developments in medical science such as:

- Cloning
- Genetics
- The Human Genome Project
- Biotechnology
- Ethics

“ The knowledge and skills set I developed whilst studying A Level Biology has equipped me for the demands of a degree in medicine
Ciaran O’Farrell, Past Pupil ”



A Level Chemistry

Chemistry is the science that systematically studies the composition, properties, and activity of organic and inorganic substances and various elementary forms of matter.

At AS Level:

AS 1: Basic Concepts in Physical and Inorganic Chemistry

AS 2: Further Physical and Inorganic Chemistry and Introduction to Organic Chemistry

AS 3: Basic Practical Chemistry

At A2 Level

A2 1: Further Physical and Organic Chemistry

A2 2: Analytical, Transition Metals, Electro chemistry and Organic Nitrogen Chemistry

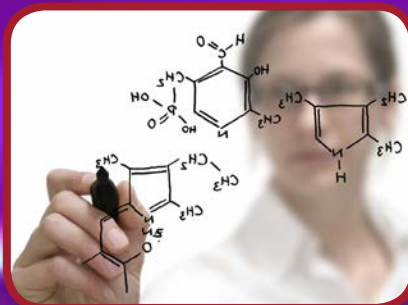
A2 3: Further Practical Chemistry

A Level Chemistry Entry Requirements

7 GCSEs A*-C. A B grade in Chemistry. A B grade in Biology would be useful.

This course could lead to:

- Analytical Chemistry
- Biochemistry
- Biotechnology
- Catalysis
- Chemical Engineering
- Chemical sales
- Chemical Technology
- Colloid Science
- Consulting
- Consumer products
- Food Chemistry



Who does it suit?

Chemistry suits students:

- With an inquisitive mind
- Who enjoy problem solving

Chemistry requires good mathematical processing skills and overlaps with both Physics and Biology.

Chemistry is the central, useful, and creative science - it underpins other scientific disciplines.

If you are interested in developing new, revolutionary substances that could improve our health, lifestyle and environment then this course is for you!

“ Chemistry is one of those subjects that what you get out of it reflects the effort you have put in. I worked hard from the start in sixth form and it paid off. I got into my first choice university course. ”

Past Pupil

“ I always liked Chemistry as it came quite easily to me, I loved the theories we covered and we had a great teacher. ”

Lauren Byrne studying Biological Sciences at Imperial College London



A Level Physics

Physics captures our imaginations and provides us with an understanding of the seemingly fantastic.

It has led to great inventions such as satellites, MRI scanners and nuclear power stations. Physics has many applications in today's society such as: medicine, financial markets, telecommunications, energy resources and mineral exploration.

Studying Physics gives you great job prospects; it is a pathway to all sorts of interesting jobs because of your knowledge, understanding and skills. You can have a choice of careers such as: the space and aerospace industries, medicine, technology, engineering, research and development, the stock market, teaching and/or IT and software industries.

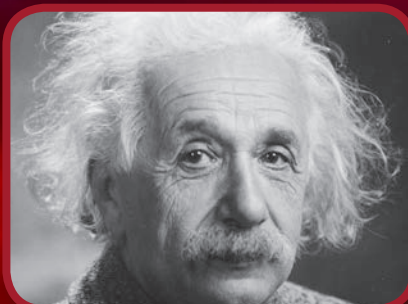
Studying Physics is not only worthwhile but is also a lot of fun!

A Level Physics Entry Requirements

7 GCSEs A*-C. B grade or better in Physics is required as well as in Mathematics. A further grade in another science would be beneficial.

This course could lead to:

- Journalism
- Law
- Finance
- Medicine
- Engineering
- Computer Science
- Physics
- Car Design
- Research
- Architecture
- Banking



Course Units:

AS Level

- **AS 1:** Forces, Energy and Electricity
- **AS 2:** Waves, Photons and Medical Physics
- **AS 3:** Practical Techniques

A2 Level

- **A2 1:** Momentum, Thermal Physics, Circular Motion, Oscillations, Atomic and Nuclear Physics
- **A2 2:** Fields and their Applications
- **A2 3:** Practical Techniques

“ Studying Physics to A2 level was extremely rewarding. The knowledge and understanding I acquired have prepared me to rise to the challenges I have met in my Mechanical Engineering degree course
Conor O'Boyle - QUB

”



A Level Sociology

Sociology is a contemporary subject, which is very much rooted in the present. It explains the way in which society “Works” and how individuals live together and co-operate through social institutions such as the education system, the family, religious institutions and the law.

Sociology examines the evolution of society and argues that a new type of society is evolving. Students enjoy the subjects as it is constantly evolving and they like to merge the academic side of the subject to current affairs, news and politics programmes which are relevant to boost the top grade in this subject.

It is an exciting and thought-provoking subject because it uncovers unspoken “truths” examining the exploitation of certain social groups like minority ethnic groups, females and the working class and explains through various perspectives, how we do not live in a fair society where everyone has an equal chance to succeed.

A Level Sociology Entry Requirements

7 GCSEs A*-C including a B in English Language.

This course could lead to:

- Teaching (primary and secondary)
- Physiotherapy
- Speech Therapy
- Psychology
- English and Drama
- Sociology
- Geography
- History
- Media Studies
- Computer Science
- Business Studies

“ A lot of time I did not feel I was actually doing work because the issues in Sociology were so interesting and got me so fired up when debating them ”

Leah Colgan, A2 student



Sociology is an essay-based subject, requiring a lot of note-taking and independent reading and is a rigorous academically intensive A Level subject.

Course Units - 2 at AS* and 2 at A2:

- **AS 1:** Education with Methods in Context - 1 hour 30 mins exam worth 60 marks
- **AS 2:** Research Methods and Topics in Sociology - 1 hour 30 mins exam worth 60 marks.

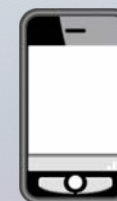
Note: This is a stand alone AS qualification.

- **A2 1:** Education with Theory and Methods - 2 Hour exam worth 80 marks (33.3% of A Level)
- **A2 2:** Topics in Sociology - 2 hour exam worth 80 marks (33.3% of A Level)
- **A2 3:** Crime and Deviance with Theory and Methods - 2 hour exam worth 80 marks (33.3% of A Level)

**Note: This is a linear A Level qualification.
See page 3 for more details.**

“ I love the way Sociology retrains your mind to always see all sides of an argument and empathise with under-dogs and those who are labelled in society ”

Lauren Fitzpatrick, Past Pupil



A Level Psychology

What is Psychology?

Psychology is the scientific study of the mind and human behaviour. Psychologists observe and conduct experiments to find out more about the way people act and interact. They try to understand what motivates, challenges or changes us and use this understanding to tackle personal and social problems.

Why Choose AQA GCE A Level Psychology?

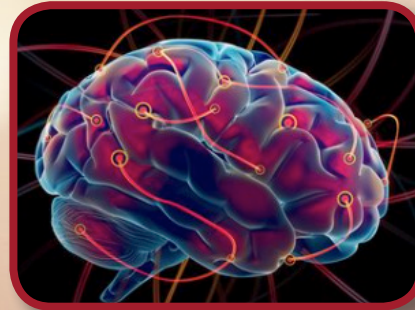
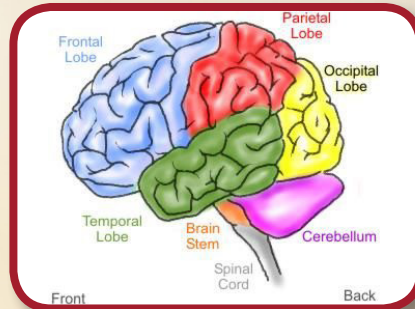
This course offers an engaging and effective introduction to psychology. Topics include the study of Memory, Attachment, Biopsychology, Psychopathology and Research Methods. You will learn the skills valued by Higher Education and employers.

What skills will I improve from studying psychology?

- Critical analysis
- Independent thinking
- Research methods, including collecting and working with data
- Organisational skills
- Communication skills

A Level Sociology Entry Requirements

7 GCSEs A*-C including a B in English and Maths.



Course Units - 2 at AS* and 2 at A2:

- **AS 1:** Introductory topics in psychology
50% AS Level
- **AS 2:** Psychology in context 50% AS Level

Note: This is a stand alone AS qualification.

- **A2 1:** Introductory topics in psychology
(33.3% of A Level)
- **A2 2: Psychology in context**
(33.3% of A Level)
- **A2 3:** Issues and options in psychology
(33.3% of A Level)

**Note: * This is a linear A Level qualification.
See page 3 for more details.**

“It’s so interesting. It’s the one subject I come home from school and say to my family ‘Guess what!’ or ‘Did you know...?’”

“Psychology is challenging with so much to learn, but I enjoy it”

”

Past Pupil Comments

This course could lead to careers and further training in:

- Health and Social Care
- Mental Health
- Human Resources
- Education

- Business
- Research

Higher education

- Clinical and Counselling
- Forensics
- Occupational

- Education
- Sports
- Neuropsychology
- Psychology is relevant to many occupations involving interactions with others

BTEC Sport

BTEC Level 3 National Subsidiary Diploma in Sport.

This is a vocational or work related qualification.

You will have the opportunity to gain specific knowledge, understanding and skills relevant to the sport and active leisure industry.

This qualification can also be used in conjunction with others to access higher education and more specialist courses.

Assessment will be through accredited assignments set by the course tutor. These will take a variety of formats.

Designated assessment criteria must be met to attain the required grade.

It will be important to provide evidence of your skills and knowledge in each unit.

BTEC PE Entry Requirements

7 GCSEs A*-C. B grade in GCSE PE is beneficial.

This course could lead to:

- Sport and Leisure Industry
- Coaching and leadership
- Teaching
- Sport Science and Therapy

Higher Education in :

- Physical Education teaching
- Physiotherapy
- Sports Science



Who can study BTEC Sport?

Essentially anyone who achieves the minimum St Louis entrance requirements can choose to study BTEC sport.

However, it is highly recommended that you have studied PE at GCSE level, and have gained a grade B or above.

Students who have not studied GCSE PE can still take BTEC Sport. However, you will need to demonstrate a strong interest in sport and must be prepared to work hard to catch up!

The course suits hard working pupils, and particularly those who are willing to spend time and effort on producing coursework to a high standard.

Course Units

- Principles of anatomy and physiology in sport
- The physiology of fitness
- Assessing risk in sport
- Sports coaching
- Fitness testing for sport and exercise
- Sports nutrition
- Psychology for sports performance



A Level Technology and Design

Technology and Design: This subject offers the opportunity for study into the processes involved in harnessing the resources of people and the earth they inhabit through the creation of appropriate artefacts and / or systems.

Are you interested in designing and making products in a range of materials?

Do you want to open up a wide range of career opportunities in the world of work or at degree level in University?

Do you want to improve your chances of a good grade at AS / A2 by choosing a subject with a large coursework content?

Do you want to be supported in a highly trained and motivated staff?

Do you want to use industry standard equipment?

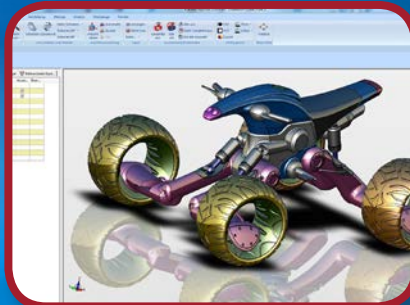
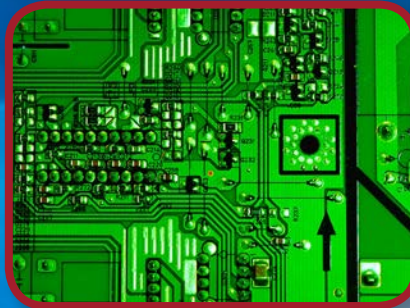
Then Technology and Design could be for you!

A Level Technology Entry Requirements

7 GCSEs A*-C including Technology at grade B or higher, English and Mathematics. Study of Art at GCSE may also help.

This course could lead to:

- Product design / 3D Design
- Industrial Design
- Civil, Electronic, Marine, Systems or Manufacturing Engineering
- Graphics / Fashion design
- Advertising
- Computer and Web Design
- Architecture
- Clean Technology
- Technical Illustrator
- Sports Technology



Course Units - 2 at AS / 2 at A2

- **AS 1:** Product Design and Systems Control
- **AS 2:** Coursework: Product Development
- **A2 1:** Systems and Control - Product Design
- **A2 2:** Coursework - Product System Design and Manufacture

Through studying AS/ A2 Technology and Design students will get the opportunity to:

- Make use of tacit knowledge and reflective practices in order to work with tasks that are challenging and often required definition
- Develop and sustain their creativity and innovative practice
- Produce high-quality produces
- Draw on a range of skills and knowledge from other subject areas

“ A Level Technology and Design has given me the foundation to study my degree course.

The theoretical principals and background knowledge offered me a sound base.

”

Kory Colgan - BSc Hons Building Surveying - University of Ulster

Technology, Engineering and Construction



BTEC Engineering

Why Engineering?

- Professionalism - Engineering courses are amongst the most advanced educational courses to study and lead to excellent degrees and job opportunities.
- Prestige - Along with doctors and lawyers, engineers are professionals who have a lot of prestige.
- Flexibility and choice - Engineering offers so many choices you can have a hard time deciding which one fits you - from electrical and mechanical to computer science or civil.
- Money - this is always one of the top reasons to study anything. It's important to know that engineers are among the top paid professionals world-wide.
- Intellectual Development - Engineering will help you grow and develop your ways of thinking.

BTEC Engineering Entry Requirements

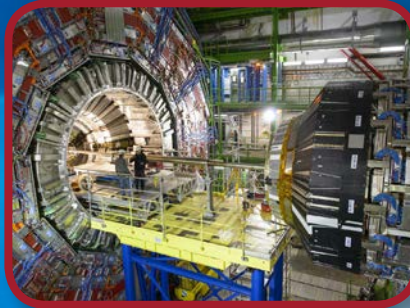
7 GCSEs A*-C including grade B in Maths and other supporting subjects such as Science and English.

This course could lead to careers:

- Construction
- Transport
- Cosmetics
- Medicine / Food / Fashion
- Technology

Higher Education in:

- Higher National Diploma
- A Bachelors degree (BEng) - 3 year course
- A Masters degree (MEng) - 4 year course



Coursework units - 6 Units to complete

Pupils must complete six units of work for the subsidiary diploma which will be selected from a range of 50 units by the teacher. The selection of units will be chosen based upon skills and prior knowledge of the pupils. Below is a sample of six units that may be selected:

- Health and Safety in the engineering work place.
- Mechanical principles and applications.
- Properties and applications of engineering materials.
- Engineering secondary finishing techniques.
- Computer Aided Drafting and Engineering.
- Computer Aided Manufacturing.

Engineers work in all kinds of environments from offices, laboratories and film studios to outdoors and underground.

Engineering today's is closely linked with technology, and plays a major role in many technological devices and advances -0 thanks to engineers you might be reading this on your phone!

Do you have what it takes?

“ Engineering has given me skills such as using specialised technologies, being able to create designs on computer aided packages and manufacture of intricate products to a high degree of accuracy and quality. It was a really enjoyable experience, especially going to a robotic engineering competition in Edinburgh! ”
Past Pupil

Technology, Engineering
and Construction



BTEC Construction

Are you interested in a course that offers flexibility and a strong work related emphasis that covers knowledge, understanding and practical skills required in the appropriate vocational sector of Construction and the Built Environment?

Then this course could be for you.

Through studying Edexcel BTEC Level 3 Subsidiary Diploma students will get the opportunity to:

- Make reasoned analytical judgements
- Deploy appropriate advanced techniques/ processes/skills
- Take responsibility in planning and undertaking activities
- Communicate effectively using appropriate behavioural and language register

BTEC Construction Entry Requirements

7 GCSEs A*-C including Construction and / or Technology, English and Mathematics.

This course could lead to:

- Architecture
- Surveying
- Planning
- Building services and engineer
- Cavity wall technicians
- Refrigeration engineers
- Thermal insulation engineers
- Civil and Structural Engineers
- Construction supervisors and managers
- Construction workers



Course Units – 3 in year 13 - 3 in year 14

Year 13

Health, Safety and Welfare in Construction and the Built Environment
Sustainable Construction
Surveying in Construction and Civil Engineering

Year 14

- Mathematics in Construction and the Built Environment
- Science and Materials in Construction and the Built Environment
- Construction Technology and Design
- Construction and Civil Engineering

By nature BTECs provide a more practical, real-world approach to learning alongside a theoretical background, giving you the knowledge, understanding and skills that you need to prepare for employment.

“ I enjoyed and was very successful with BTEC Construction and the built environment. It helped me to develop a wide range of skills and attributes to further my studies at University and helped to give me a clear insight into my future pathway. ”

Past Pupil

**Technology, Engineering
and Construction**



St Louis Post 16 CEIAG Programme

All Year 13 and Year 14 students at St Louis have a timetabled period of Careers Education each week. A variety of presentations and information seminars take place facilitated by Industry/Business Representatives, Sentinus, Higher Education Institutions, Business Mentors and Entrepreneurs, Young Enterprise NI, Student Finance and Welfare Services and Past Pupils. Information about Career Events, Outreach Opportunities at Universities and Colleges and Work Experience schemes are posted on the St Louis Twitter and Facebook pages and emailed to students via their C2kni email account.

Students are given the opportunity to attend Open Days at universities as well as relevant university faculty information seminars and specific career related workshop events. In Year 13 St Louis works in partnership with Charter NI and a range of NI companies to help support students seeking relevant work experience placements. The designated Work Experience Week will be in June 2017 however students are given leave from timetabled classes throughout the year to engage in relevant, meaningful work placements as companies and businesses often run work placements at various times and operate a competitive selection process.

Students in Year 14 are fully supported during the UCAS, CAO and St Mary's University College application processes and are also personally guided through the application and interview procedures for Medicine, Dentistry, Veterinary Science, Nursing and Midwifery and courses at Teacher Training Colleges. St Louis makes every effort to offer a personalised approach and in addition to timetabled classes students have the facility of Career Guidance sessions during the pastoral period each Friday morning.

Pupils are encouraged to discuss career plans with the Head of Department during non-teaching time. The menu of activities is extensive and will alter according to the career needs of the students and the academic curriculum and exam timetable.

Month	Year 13	Year 14
August / Sept	<ul style="list-style-type: none"> Careers support and advice in relation to post 16 subject options. Review of personal Career Plans 	<ul style="list-style-type: none"> UCAS registration Personal Statement Workshops Open Days at QUB and UU, St Mary's University College
October	<ul style="list-style-type: none"> Unit of work on Career Management. Reviewing CVs Initial requests to CharterNI and IT companies for work placements QUB and UU INSIGHT events 	<ul style="list-style-type: none"> Weekly UCAS Tutorials Degree / HND course research and selection OXBRIDGE and CUKAS applicants - early interviews with Principal and dispatch of forms by 15th October
November	<ul style="list-style-type: none"> Physiotherapy, Occupational Therapy, Radiotherapy, Dietetics and Pharmacy information seminars (CHARTER NI) QUB / UU Outreach Events Applications to PwC insight events in NI Applications to Rockwell Collins Work Experience week (by 30th Nov) 	<ul style="list-style-type: none"> UCAS SLMT Interview with each applicant Dispatch of application forms to UCAS CAO Open Days Trinity and UCD Open Days
December	<ul style="list-style-type: none"> HE Research continues Tech in Computing Event at QUB DKIT presentation Applications to work placement in Rockwell Collins 	<ul style="list-style-type: none"> CAO St. Mary's University College application tutorials and presentations DKIT Open Day
January	<ul style="list-style-type: none"> QUB Management School Information seminar and workshops 	<ul style="list-style-type: none"> Skills based CV produced University Interview Preparation
February	<ul style="list-style-type: none"> Presentation from UU, QUB, Liverpool John Moores University Methodist College and QUB Engineering Event UCAS Convention - EIKON centre 	<ul style="list-style-type: none"> SELB Higher Education Finance Conference Applications to HND and FD courses at SRC, SERC, BMET Higher Apprenticeship applications (where appropriate)
March	<ul style="list-style-type: none"> Methodist College Medical Applicants Event & Law Event 	<ul style="list-style-type: none"> Responding to university offers QUB Student Welfare and Money Matters Presentation NIHE Accommodation Advice Talk
April / May	<ul style="list-style-type: none"> Formal Personal Career Plan 	<ul style="list-style-type: none"> Final CF and CI confirmed with UCAS Preparing for transition - past pupils presentations
May / June	<ul style="list-style-type: none"> Work experience Post Exams in June 	<ul style="list-style-type: none"> Accommodation bookings at QUB / UU / Stranmills

Selecting Post 16 options

Large numbers of students are applying to universities resulting in higher levels of competition for reduced places on degree courses at NI universities. The lower tuition fee in NI universities has resulted in a higher demand for places and as a result the grade requirements for many popular courses have increased. It is therefore important to engage in careers research and consider Post-16 subject options very carefully.

The most important questions you need to ask when choosing Post-16 subjects are:

- What subjects do I require for the future career path I am considering?
- Which subjects will I enjoy most and potentially gain the highest level of success in?
- Should I choose general or Applied A levels or Applied courses such as the Cambridge Technical Level 3 Introductory Diploma, a BTEC Subsidiary Diploma, an AQA Level 3 Certificates, a CoPE level 3 course or a mixture of courses?
- Are there any A Level Subjects or Vocational Courses that are NOT ACCEPTABLE to University Admissions departments within my academic profile?

The answers to these questions will come from reflecting on your skills and interests, evaluating your past academic performance and learning experiences as well as analysis of new A-Level subjects and applied courses on offer. Mature decisions are made when students spend time researching the options in the light of past performances and future career plans. Students are advised to engage in discussion with parents, teachers and careers advisors before finalising Post-16 choices.

How many subjects will I select?

Students are normally required to select a maximum of four subjects for Post-16 study. Students may drop an A level subject at the end of Year 13 and accept an AS grade in this subject.

Applied courses are accredited after two years of work. A student is not advised to opt out of a BTEC Subsidiary Diploma/ an OCR Cambridge Technical Level 3 Introductory Diploma or an AQA Level 3 Extended Certificate at the end of Year 13, but if they do so, they may be awarded a Certificate with associated UCAS points acknowledging achievement in 3 units of work rather than 6.

Before considering a reduction of four to three subjects in Year 14, students must consult a careers advisor and research degree entry profiles very carefully.

There are five main points to consider:

- Competitive and popular courses in the South of Ireland currently have such a high entry profile that students may require four subjects to meet the entry requirements
- Applicants to prestigious universities such as Oxford, Cambridge, and London Imperial may be required to offer four A-Level subjects with at least one achieved at A* standard
- Irish universities may not accept Applied A level subjects with a coursework element of 40% or more. Applied level 3 courses such as BTEC Subsidiary Diplomas, Cambridge Technical Level 3, and CoPE Level 3 Awards are also unacceptable to most ROI institutions. DKIT (Dundalk Institute of Technology) is an exception to this rule and will accept the BTEC Subsidiary Diploma
- Queen's University and Stranmillis University and many Russell Group Universities in the UK will accept only one applied course in an applicant's academic profile. St Mary's University College will accept only one applied course for teaching but will consider two applied courses for entry to the BA Hons Liberal Arts degree. Please refer to the admission guidelines at all institutions for further clarification.
- The Russell Group of Universities, for example Queen's University, Stranmillis University College and St Mary's University College Belfast ask for a specific grade profile for BTECs, AQA Level 3 Certificates and Cambridge Technical Level 3 courses rather than an overall

Specific Subject Requirements

A large range of careers prospectuses are available from the Careers Department. Year 12 students are welcome to take copies of the University of Ulster and Queen's University prospectuses to research degree course requirements. Students are strongly encouraged to take time to engage in independent career research.

The entry profile for many degree courses will state only the grades or UCAS points required. In this situation many subject combinations are deemed appropriate. Some degrees require specific A-level subject combinations and the information presented below is a basic guide to some of the requirements for entry.

Students considering any of the degree courses outlined below are advised to research requirements across a range of university websites as not all universities apply the same criteria.

Veterinary Science – A number of universities accept two A-level Science subjects and one other academic subject but other universities require three A-level Science subjects or alternatively two A Level Science subjects plus Maths. (Minimum grade requirement AAB with a grade A preferred in Chemistry). Most universities will require applicants to have studied 3 science subjects at GCSE level or have completed a course in Double Award Science.

Medicine – A number of universities accept two A-Level Science subjects but others require three A-level Science subjects. The minimum A-level grade requirement is AAA along with an AS grade A in a fourth subject. (Grade A required in A level Chemistry). All universities will require applicants to have studied 3 science subjects at GCSE level or have completed a Double Award in Science.

Pharmacy – Two Science A-levels and one other A-Level subject. (Minimum grade requirement is AAB with a grade A in Chemistry preferred in some universities, essential for others. Biology is preferred as the second Science subject).

Dentistry – A minimum of two A-Level Science subjects to include Chemistry. If Biology is not taken at A2, an AS Biology at grade B is required. (Minimum A-Level grade requirement AAA along with an AS grade A expected in a fourth subject. Grade A expected in A2 Chemistry). All UK universities will require applicants to have studied 3 science subjects at GCSE level or have completed a course in Double Award Science.

Dietetics – Two Science A-level subjects from Chemistry / Biology / Physics / Home Economics / Mathematics with Chemistry preferred in many institutions. *Students should have studied DA Science at GCSE Level or alternatively passed a GCSE In Chemistry.

Engineering – Mechanical, Aeronautical and Civil Engineering courses demand a Maths A-Level and one other subject taken from Physics/ Chemistry/Biology/Technology and Design. Take note that most universities will require A levels in both Maths and Physics for Engineering degree courses. Some will accept Mathematics combined with Design Technology/ Engineering. A few universities will permit a Design Technology and Engineering combination for BEng entry to some Engineering courses so a

lot of research is required before choosing subjects post 16.

Computer Science – Universities place a strong emphasis on A Level Mathematics in addition to A levels in Computing / Software Systems Development and other Science based subjects. *Please note that Applied IT Is NOT ACCEPTED as an alternative to an A Level in SSD/Computer Science.

Physiotherapy – One A-Level Science or Mathematics required.

Radiography/Radiotherapy – One A-Level Science Subject required. Applicants must have GCSE Physics or Double Award Science.

Optometry – Two A-Level Science subjects from Chemistry / Biology / Physics / Maths. Applicants must have GCSE Physics or Double Award Science.

Environmental Health – A grade A is expected from one science based subject Physics / Chemistry / Biology / Maths or Home Economics.

Teaching - Applicants to St Mary's University College may require AAA grades or equivalent and there are specific A level subject combinations that must be researched. In England, the A level entry requirements for teacher training courses range from ABB– BCC. All applicants are expected to have a grade C or higher in English, Maths and Science. Some institutions will favour a grade B in English and Maths.

Nursing and Midwifery - Some competitive Nursing and Midwifery degree courses in the UK favour students with an AS or A2 Biology. All Nursing and Midwifery degree courses require a minimum grade C in English Language. All Midwifery degree courses require a grade A/B in GCSE Mathematics (QUB expect a grade B in mathematics).

QUB Management school - All applicants to degree courses in Actuarial Science, Accounting, Business Management, Business Economics, International Business with a language and Finance at Queen's must have a grade B in GCSE Mathematics.

**It is not possible to detail subject specific guidelines for all UK degree courses and students are advised to check subject choices with a careers advisor and university admissions departments before finalising options.*

UCAS / Other Tariff Point System

Please note the tariff points identified are for 2017 onwards and the new UCAS tariff point system is included below.

Not all universities and colleges use the UCAS Tariff. Many prefer to express their entry requirements and make offers in terms of qualifications and grades rather than in Tariff points. Around one third of course entry requirements make reference to the Tariff. In Northern Ireland, the University of Ulster uses the UCAS tariff when making offers for a large number of its degree courses but Queen's University, Belfast does not use a tariff point system and expresses all offers in terms of grades.

GCE A Level

Grade	Tariff Point
A*	56
A	48
B	40
C	32
D	24
E	16

BTEC Subsidiary Diploma in Construction / Engineering / Music technology / Sport

Level	Tariff Point
Distinction *	56
Distinction	48
Merit	32
Pass	16

BTEC Certificate in Construction / Engineering / Music technology / Sport / AQA Level 3 Certificate in Applied Business

Level	Tariff Point
Distinction *	28
Distinction	24
Merit	16
Pass	8

GCE AS Level

Grade	Tariff Point
A	20
B	16
C	12
D	10
E	6

OCR Cambridge Technical Level 3 Introductory Diploma ICT AQA Level 3 Extended Certificate in Applied Business

Level	Tariff Point
Distinction *	56
Distinction	48
Merit	32
Pass	16

Certificate of Personal Effectiveness (CoPE)

Grade	Tariff Point
Pass	16

Music Qualifications

Certificate in Graded Examination in Music Performance

Grade	Tariff Point		
	Grade 8	Grade 7	Grade 6
Distinction	30	16	12
Merit	24	12	10
Pass	18	10	6

Certificate in Graded Examination in Music Theory

Grade	Tariff Point		
	Grade 8	Grade 7	Grade 6
Distinction	10	8	6
Merit	9	7	5
Pass	8	6	4

Speech and Drama Qualifications – graded qualifications

Grade	Tariff Point		
	Grade 8	Grade 7	Grade 6
Distinction	30	16	12
Merit	27	14	10
Pass	24	12	8

Speech and Drama – Performance Studies

LAMDA Certificate in Speech and Drama: Performance Studies

Grade	Tariff Point
Distinction	16
Merit	12
Pass	8

OCN NI Level 3 Award in Youth Work Practice – 12 credits

Grade	Tariff Point
Pass	8

CAO Tariff Tables

Universities in the republic of Ireland do not accept applied courses such as BTEC Courses or OCR Cambridge Technical level 3 courses or CoPE*.

A level Maths, if offered as one of your best three A levels, will bring in 25 extra points.

**Dundalk Institute of Technology (DKIT), is the only institution to accept BTEC and OCR Cambridge Technical qualifications and it operates a different tariff system as shown below.*

ROI Universities and Institutions of Technology Tariff Point

Grade	GCE A2 (best 3 A2 Levels only)	GCE AS (if 4th subject is at AS level)	4th A2 Level (if 4th subject at A2)
A*	185	Not Applicable	45
A	156	26	38
B	131	22	32
C	106	18	26
D	84	14	20
E	63	11	15

ROI Institutes of Technology other than DKIT

Grade	GCE A2 (best 3 A2 subject grades only)	GCE AS or 4th A2 subject
A*	180	Not applicable
A	150	60
B	130	55
C	100	40
D	65	25
E	45	20

Dundalk Institute of Technology (DKIT) Tariff points for 2018-19

Grade	GCE A2 (best 3 A2 subject grades only)	GCE AS or 4th A2 subject
A*	175	Not applicable
A	165	75
B	140	65
C	120	50
D	100	35
E	50	20

DKIT accepts the following Applied Courses:

BTEC / OCR Cambridge Technical

BTEC Subsidiary Diploma or Cambridge Technical Level 3 Introductory Diploma (6 modules) is equivalent to 1 A-Level Max Score: 165

Score per module

Distinction 27.5 points

Merit 18.33 points

Pass 9.17 points

It Is Important to check out specific course entry requirements at DKIT. Visit www.dkit.ie and click into courses and then select entry requirements to discover If there are any GCSE/GCE subjects required within your entry profile.

Use the tariff calculator on www.ucas.com to calculate how much your qualifications are worth in points.

<https://www.ucas.com/ucas/undergraduate/getting-started/entry-requirements/tariff/calculator>

Future job opportunities in Northern Ireland

The following areas are extremely important to the Northern Ireland economy:

- ICT / Computing
- creative and digital media
- business and financial services
- advanced manufacturing and engineering
- renewable energies and recycling
- health and life sciences
- agri-food sector

ICT / Computing

Information and Communications Technology (ICT), particularly software development, database development, systems architecture and internet specialist skills, is at the heart of every organisation and is central to our daily lives: mobile communication, computer games, touch screen technology, satellite navigation devices – the list is endless. Many large international IT based companies have chosen Northern Ireland as their base in the UK and these include: Liberty IT, Allstate, First Derivatives, Seagate, Fujitsu, and Concentrix. Northern Ireland is one of the world's top destinations for financial technology and R&D investment (Invest NI 2017).

Creative and Digital Media

Digital is everywhere and is at the heart of the UK economy, underpinning growth through both the development of new technologies and the provision of services to businesses and consumers.

Key market growth areas identified by national and international level research include:

- cloud computing
- mobile technologies
- cross-platform mobile applications
- computer games and digital entertainment
- cyber-security products and services
- green/low carbon IT products

Business and Financial Services

There are seven different industries within the finance, accountancy and financial services sector. Jobs vary from:

- accountants
- bank officials
- underwriters
- insurance and investment brokers
- actuaries and pensions advisers

Advanced Manufacturing and Engineering

This includes careers requiring CAD skills, CNC machine operatives, mechanical and electrical engineering skills including at technician level and strategic marketing to name but a few.

Renewable Energies and Recycling

European and global agreements on more energy efficient technology are creating demand for new engineering solutions. Mechanical engineers are at the forefront of designing everything from better forms of green energy and zero emission engines to the latest breed of nuclear power stations. It's a highly skilled profession but has multiple entry routes.

Careers in this sector include:

- mechanical engineers
- research and development managers
- physical scientists
- design and development engineers
- biological scientists and biochemists

Health and Life Sciences

The Health and Life Sciences sector is one of Northern Ireland's most important sectors. The sector combines all elements of science and technology that contribute to the discovery and development of products for the healthcare and well-being of humans and animals. Northern Ireland companies and universities have experience in delivering innovative research, products and services to global customers in areas such as Precision Medicine, Diagnostics, Connected Health, Clinical Trials and Data Analytics.

Agri-Food

Food and drink manufacturing includes the processing of meat and poultry, dairy, fish and shellfish, fruit and vegetables and the production of bakery and drinks products amongst others. Areas of work include bakery, distillery, creamery and ready meals production. Jobs can include:

- laboratory technicians
- food scientists
- biotech
- machine operatives
- butcher
- supply chain manager

Careers research is a vital part of choosing your A Level options. Below are some useful websites to help you make your choices.

Useful Websites

www.ucas.com - This site allows you to search for courses on the basis of subject, university / college or location. The site also provides links to individual university and college websites.

www.cao.ie - Comprehensive website for searching degrees in ROI and applying online

Exam Board websites

www.ccea.org.uk - Northern Ireland's Exam Board

www.aqa.org.uk - AQA

www.edexcel.org.uk - Pearson / Edexcel

www.ocr.org.uk - Oxford Cambridge and RSA

General Websites for Career Information and projected job trends

www.investigatecareers.com - Password for St Louis Grammar Students - **Amazon**. The site allows you find information about different careers and to research the Labour Market Information and predicted Job trends up to 2022.

www.nidirect.gov.uk/careers - Register on the website and use the Careers A-Z facility to research job information and links between GCSE subject choices and careers. Examine information about the skills in demand in NI.

www.icould.com - Complete the buzz quiz to identify what type of work you maybe suited to. Research different careers and listen to case studies.

www.careersportal.ie - Comprehensive website for searching out degree courses in ROI and researching career options.

Recruitment websites specific to NI jobs

www.recruitni.com

www.jobcentreonline.co.uk

www.nijobs.co.uk

Websites to support development of CV'S and complete job application forms

www.fish4.co.uk/career-advice/how-to-write-a-cv/

www.prospects.ac.uk/careers-advice/cvs-and-cover-letters/how-to-write-a-cv

www.standout-cv.com/pages/how-to-write-a-cv

www.kent.ac.uk/careers/cv.htm

Universities

www.qub.ac.uk - Queen's University Belfast

www.ulster.ac.uk - The University of Ulster

www.stmarys-belfast.ac.uk - St Mary's University College Belfast

www.dkit.ie - Dundalk Institute of Technology

www.nui.ie - The National Universities of Ireland website

www.ucd.ie - University College Dublin

www.tcd.ie - Trinity College Dublin

www.ncad.ie - National College of Art and Design

www.dcu.ie - Dublin City University

www.dit.ie - Dublin Institute of Technology

www.ul.ie - The University of Limerick

www.ucc.ie - University College Cork

Regional Colleges

www.src.ac.uk - Southern Regional College

www.serc.ac.uk - South Easter Regional College

www.belfastmet.ac.uk - Belfast Metropolitan

General sites for researching Universities

www.opendays.com - A directory of university and college open days at UCAS universities.

www.thecompleteuniversityguide.com - This site allows you to compare university ratings and investigate subject league tables. It will give a valuable insight into life at a range of UK universities.

www.push.co.uk - A quick and often humorous insight into the different universities

www.unistats.com - This site brings together key sources of official information and is intended to help students compare institutions and subjects.

www.hotcourses.com - A course database with search facilities

www.university.which.co.uk/courses - Support on finding out about a vast range of university degree courses.

www.bestcourse4me.com/explore/ - Support on searching out courses at university and comparing options.

www.topuniversities.com/courses - Course guides and rankings

Frequently Asked Questions

Q How many AS Levels / Post 16 courses do I need to study in the first year of St Louis 6th form?

A We expect most students to study a combination of 4 general/ applied A level subjects or BTEC / Cambridge Technical subjects in the first year. Those who study three post-16 courses will complete the CoPE qualification in Year 13. Pupils may combine applied / BTEC / Cambridge Technical courses with A levels to a maximum of 4 subjects. However, pupils should be cautious of choosing more than two applied courses if you are thinking of applying to St Mary's University College, Stranmillis, Queen's or other Russell Group Universities.

Q How many subjects do I study in Year 14?

A Most students continue to study 3 A2/ Applied subjects in Year 14, but where it is appropriate, it is possible to continue with four. There is an on-going guidance process throughout the two years which focuses on your future plans and ambitions and we tailor your curriculum accordingly. We give a personalised approach throughout.

Q What is the difference between AS and A2?

A AS levels are qualifications in their own right. You can cash them in at the end of Year 13 and you will have achieved 3 or 4 AS Levels.

Q What is a linear A Level?

A See page three for more details. This new form of A Level has been introduced for some UK Examination Boards.

Q What are BTEC Subsidiary Diplomas and Cambridge Technical Level 3 Introductory Diplomas?

A BTEC and Cambridge Technical Awards are post-16 courses equivalent to A Levels. This option offers a vocational route and a more enjoyable route for those who prefer a portfolio based course with only one examination-based module.

Q What is an Applied A Level?

A Applied A Levels are a post-16 course. This option offers a more applied / vocational route and a more enjoyable route for those who prefer a portfolio based course. These are more often externally assessed through coursework or a small number of examinations.

Q Do I study all my subjects at the St Louis site?

A Health and Social Care is currently studied at the Kilkeel High School. Engineering, Music Technology, Software Systems Development and Moving Image may be taught in both St. Louis and Kilkeel High. CoPE is also taught between the St. Louis and Kilkeel High sites.

Q What is the difference between school and St Louis 6th Form?

A There is separate accommodation for use exclusively by 6th Formers. This includes: dedicated study facilities; a 6th form common room with music, comfortable sofas; dedicated IT facilities; the ability to use your own devices to access the school's wireless network in the study room and access to the fitness suite in your free periods. Sixth Form prefects are elected every year. A Head Boy and Girl are also chosen, and they represent Sixth Form pupils on the school council and the school at public events. There are also other possibilities to take responsibility including roles such as Deputy Head Boy and Girl, prefects and bus monitors. All Sixth Form pupils are expected to mentor a Year 8 pupil.

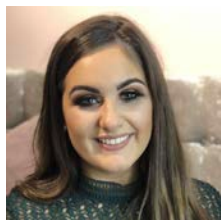
Q What extra-curricular activities can I take part in?

A There are a great number of after school and extra curricular activities you can take part in which include: Gaelic Football, Camogie, the Choir, Debating Society and Public Speaking, Jazz / String ensemble, entrance to numerous competitions including SENTINUS, the Texaco Art Competition and many more. You may also use the ICT facilities after school or practice your music skills in the rehearsal rooms.

Q Once I have my results, what happens next and when do I find out whether I have got a place in St Louis 6th Form?

A If you are not already a St. Louis pupil you must make an afternoon appointment at the school on the day the results come out. You will then be given a time to visit the school, accompanied by a parent or guardian, for a short interview with a member of the Senior Management Team. You will also be asked to bring your results slips, previous two school reports, birth certificate and any other supporting documentation you may have for example certificates or awards, progress files etc.

Pupil Profile



Name Kerry Grant

Age 19

University BSc Hons Consumer Management and Food Innovation at Ulster University

A Levels Achieved

Nutrition and Food - A* / Engineering - A / Health and Social Care - B

"My time at St. Louis was very enjoyable. I was thoroughly engaged in my A-Level subjects, and created a strong bond with my teachers which was important as they played a role in helping me achieve the grades I did."

Whilst studying at St. Louis, I was given the opportunity to participate in many extra-curricular activities such as senior prefect, Pope John Paul II Award, golf and football teams, which enhanced my CV and personal statement (two very important documents).

St. Louis gave me a great education and prepared me well for university and the future ahead."



Pupil Profile

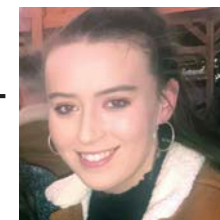
Name Maria Gribben

Age 19

University Ulster University Jordanstown - BSc Environmental Health

A Levels Achieved

Nutrition & Food Science - A / Health & Social Care - B / Applied Business Studies - Distinction.



"I strongly feel that my time at St. Louis has made me the person who I am today. All of the staff and pupils created the tight knit community that I was honoured to be a part of. The balance between academics and extra curricular activities such as Ladies Football enabled me to learn how to make the best of both worlds."

My 7 years at St. Louis also provided me with friends for life and memories that I will I never forget such as being on the first ladies winning team of an Ulster Final for GAA."

I first heard about the Environmental Health course at Ulster university at the school career convention when I was in fifth year. Once I heard about the course I immediately knew that it was what I wanted to do to and so this enhanced my focus and drive enabling me to work hard at my A Levels to ensure that I got into the course."

I am sure that I would not be where I am at now if it was for St. Louis."





How to find us
151 Newry Road
Kilkeel
County Down
BT34 4EU

(028) 4176 2747
info@stlouis.org.uk



GPS

54.065238

-6.031312



Follow us on Twitter @stlouisgrammar



Visit our Facebook site: <https://www.facebook.com/stlouisgrammarschool/>



Watch us at <http://www.youtube.com/stlouisgrammarschool>



Visit our school website at <http://www.stlouis.org.uk>

www.stlouis6thform.com